

ルートと5thの練習

① ルートと5th 上行系のみ

Cm7 F7 B \flat Maj7 E \flat Maj7 Am7(\flat 5) D7 Gm



② ルートと5th 下行系のみ

Cm7 F7 B \flat Maj7 E \flat Maj7 Am7(\flat 5) D7 Gm



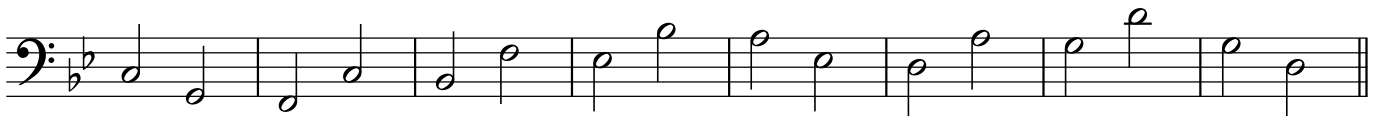
③ ルートと5th 上行系・下行系(音域に気を付けて)混ぜてみる その1

Cm7 F7 B \flat Maj7 E \flat Maj7 Am7(\flat 5) D7 Gm



④ ルートと5th 上行系・下行系(音域に気を付けて)混ぜてみる その2

Cm7 F7 B \flat Maj7 E \flat Maj7 Am7(\flat 5) D7 Gm



⑤ 5thからルートに進む時、可能な場所で経過音を挟む

Cm7 F7 B \flat Maj7 E \flat Maj7 Am7(\flat 5) D7 Gm



パターン練習

① 上行系 R-2-3-5 ※D7はこのパターンだと増2度音程ができるので違うパターンです

Cm7 F7 B♭Maj7 E♭Maj7 Am7(b5) D7 Gm



② 下行系 R-7-6-5

Cm7 F7 B♭Maj7 E♭Maj7 Am7(b5) D7 Gm



③ ①と②を混ぜる その1

Cm7 F7 B♭Maj7 E♭Maj7 Am7(b5) D7 Gm



④ ①と②を混ぜる その2

Cm7 F7 B♭Maj7 E♭Maj7 Am7(b5) D7 Gm



⑤ その他のパターンや経過音を使用したパターン

Cm7 F7 B♭Maj7 E♭Maj7 Am7(b5) D7 Gm



Autumn Leaves Bass Line

Cm7 F7 B♭Maj7 E♭Maj7 Am7(b5) D7 Gm

First staff of music in bass clef, 4/4 time, key of Bb. It contains a sequence of notes corresponding to the first set of chords above.

2feel

※1

※2

Cm7 F7 B♭Maj7 E♭Maj7 Am7(b5) D7 Gm

Second staff of music in bass clef, 4/4 time, key of Bb. It contains a sequence of notes corresponding to the second set of chords above.

Am7(b5) D7 Gm Cm7 F7 B♭Maj7 E♭Maj7

Third staff of music in bass clef, 4/4 time, key of Bb. It contains a sequence of notes corresponding to the third set of chords above.

Am7(b5) D7 Gm Am7(b5) D7 Gm

Fourth staff of music in bass clef, 4/4 time, key of Bb. It contains a sequence of notes corresponding to the fourth set of chords above.

Cm7 F7 B♭Maj7 E♭Maj7 Am7(b5) D7 Gm

Fifth staff of music in bass clef, 4/4 time, key of Bb. It contains a sequence of notes corresponding to the fifth set of chords above.

Walking Bass

※3

※4

Cm7 F7 B♭Maj7 E♭Maj7 Am7(b5) D7 Gm

Sixth staff of music in bass clef, 4/4 time, key of Bb. It contains a sequence of notes corresponding to the sixth set of chords above.

※5

Am7(b5) D7 Gm Cm7 F7 B♭Maj7 E♭Maj7

Seventh staff of music in bass clef, 4/4 time, key of Bb. It contains a sequence of notes corresponding to the seventh set of chords above.

Am7(b5) D7 Gm Am7(b5) D7 Gm

Eighth staff of music in bass clef, 4/4 time, key of Bb. It contains a sequence of notes corresponding to the eighth set of chords above.

※6