

DIATONIC CHORDS IN C

(T)	C Maj7	I Maj7	Ionian						
		R	T9	3	S4	5	T13	7	R
(SD)	Dm7	II m7	Dorian						
		R	T9	b3	T11	5	S6	b7	R
(T)	Em7	III m7	Phrygian						
		R	Sb2	b3	T11	5	Sb6	b7	R
(SD)	F Maj7	IV Maj7	Lydian						
		R	T9	3	T#11	5	T13	7	R
(D)	G7	V 7	Mixo.						
		R	T9	3	S4	5	T13	b7	R
(T)	Am7	VI m7	Aeolian						
		R	T9	b3	T11	5	Sb6	b7	R
(D)	Bm7(b5)	VII m7(b5)	Locrian						
		R	Sb2	b3	T11	b5	Tb13	b7	R

セカンダリー・ドミナントのコードスケール

ターゲット・コード



A7 V7/II Mixo.(9 b13)

R T9 3 S4 5 T♭13 b7 R

↪ Dm7

B7 V7/III Mixo.(♭9,♭13)

R T♭9 T♯9 3 S4 5 T♭13 b7 R

↪ Em7

C7 V7/IV Mixo.

R T9 3 S4 5 T13 b7 R

↪ FMaj7

D7 V7/V Mixo.

R T9 3 S4 5 T13 b7 R

↪ G7

E7 V7/VI Mixo.(♭9,♭13)

R T♭9 T♯9 3 S4 5 T♭13 b7 R

↪ Am7

セカンダリードミナントに対するリレイティッド・コード

① III^{m7} Phrygian

Em7 A7 Dm7

V7/II

R Sb2 b3 T11 5 Sb6 b7 R

Detailed description: This staff shows the Phrygian mode starting on E. The notes are E (R), F (Sb2), G (b3), A (T11), B (5), C (Sb6), D (b7), and E (R). A bracket connects the first six notes to the Em7 chord. A second bracket connects the last six notes to the A7 chord. An arrow labeled V7/II points from A7 to the Dm7 chord.

② RII^{m7}(b5) Locrian

F#m7(b5) B7 Em7

V7/III

R Sb2 b3 T11 b5 T11 b7 R

Detailed description: This staff shows the Locrian mode starting on F#. The notes are F# (R), G (Sb2), A (b3), B (T11), C (b5), D (T11), E (b7), and F# (R). A bracket connects the first six notes to the F#m7(b5) chord. A second bracket connects the last six notes to the B7 chord. An arrow labeled V7/III points from B7 to the Em7 chord.

③ RII^{m7} Dorian

Gm7 C7 FMaj7

V7/IV

R T9 b3 T11 5 S6 b7 R

Detailed description: This staff shows the Dorian mode starting on G. The notes are G (R), A (T9), B (b3), C (T11), D (5), E (S6), F (b7), and G (R). A bracket connects the first six notes to the Gm7 chord. A second bracket connects the last six notes to the C7 chord. An arrow labeled V7/IV points from C7 to the FMaj7 chord.

④ VI^{m7} Aeolian

Am7 D7 G7

V7/V

R T9 b3 T11 5 Sb6 b7 R

Detailed description: This staff shows the Aeolian mode starting on A. The notes are A (R), B (T9), C (b3), D (T11), E (5), F (Sb6), G (b7), and A (R). A bracket connects the first six notes to the Am7 chord. A second bracket connects the last six notes to the D7 chord. An arrow labeled V7/V points from D7 to the G7 chord.

⑤ (VII^{m7}(b5)) Locrian

Bm7(b5) E7 Am7

V7/VI

R Sb2 b3 T11 b5 Tb13 b7 R

Detailed description: This staff shows the Locrian mode starting on B. The notes are B (R), C (Sb2), D (b3), E (T11), F (b5), G (Tb13), A (b7), and B (R). A bracket connects the first six notes to the Bm7(b5) chord. A second bracket connects the last six notes to the E7 chord. An arrow labeled V7/VI points from E7 to the Am7 chord.

サブスティテュート ドミナントのコードスケール

ターゲットコード



Db7 SV7 Lydianb7



R T9 3 T#11 5 T13 b7 R

C Maj7

Eb7 SV7/II Lydianb7



R T9 3 T#11 5 T13 b7 R

Dm7

F7 SV7/III Lydianb7



R T9 3 T#11 5 T13 b7 R

Em7

Gb7 SV7/IV Lydianb7



R T9 3 T#11 5 T13 b7 R

F Maj7

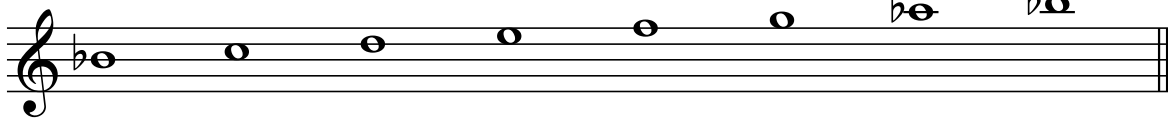
Ab7 SV7/V Lydianb7



R T9 3 T#11 5 T13 b7 R

G7

Bb7 SV7/VI Lydianb7



R T9 3 T#11 5 T13 b7 R

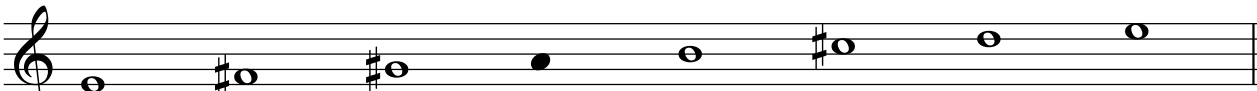
Am7

Key C

エクステンディッドドミナントのコードスケール

E7 Mixo.

(3)

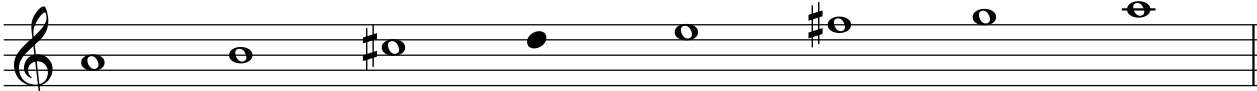


R T9 3 S4 5 T13 $b7$ R

Detailed description: A musical staff in treble clef showing the E7 Mixolydian scale. The notes are E, F#, G#, A, B, C, D. The scale is labeled with Roman numerals: R (root), T9 (9th), 3 (3rd), S4 (4th), 5 (5th), T13 (13th), $b7$ (flat 7th), and R (root).

A7 Mixo.

(6)



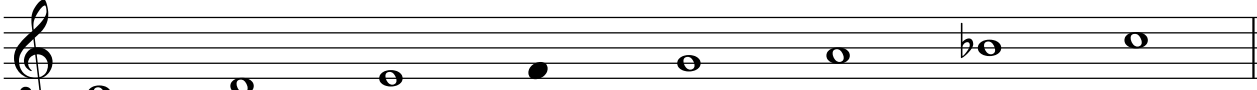
R T9 3 S4 5 T13 $b7$ R

Detailed description: A musical staff in treble clef showing the A7 Mixolydian scale. The notes are A, B, C, D, E, F, G. The scale is labeled with Roman numerals: R (root), T9 (9th), 3 (3rd), S4 (4th), 5 (5th), T13 (13th), $b7$ (flat 7th), and R (root).

スペシャルファンクションドミナントのコードスケール

C7 Mixo.

I 7

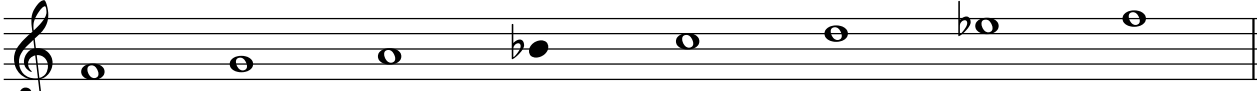


R T9 3 S4 5 T13 $b7$ R

Detailed description: A musical staff in treble clef showing the C7 Mixolydian scale. The notes are C, D, E, F, G, A, B. The scale is labeled with Roman numerals: R (root), T9 (9th), 3 (3rd), S4 (4th), 5 (5th), T13 (13th), $b7$ (flat 7th), and R (root).

F7 Mixo.

IV7(in B)

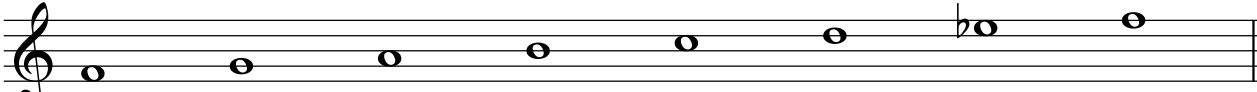


R T9 3 S4 5 T13 $b7$ R

Detailed description: A musical staff in treble clef showing the F7 Mixolydian scale. The notes are F, G, A, B, C, D, E. The scale is labeled with Roman numerals: R (root), T9 (9th), 3 (3rd), S4 (4th), 5 (5th), T13 (13th), $b7$ (flat 7th), and R (root).

F7 Lydian $b7$

IV7

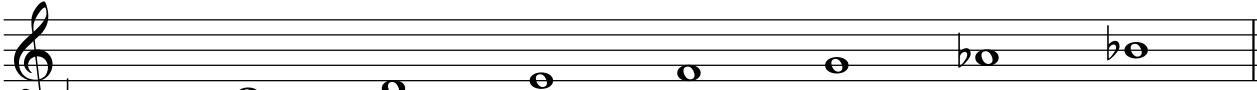


R T9 3 T#11 5 T13 $b7$ R

Detailed description: A musical staff in treble clef showing the F7 Lydian flat 7 scale. The notes are F, G, A, B, C, D, E. The scale is labeled with Roman numerals: R (root), T9 (9th), 3 (3rd), T#11 (sharp 11th), 5 (5th), T13 (13th), $b7$ (flat 7th), and R (root).

B b 7 Lydian $b7$

b VII7



R T9 3 T#11 5 T13 $b7$ R

Detailed description: A musical staff in treble clef showing the Bb7 Lydian flat 7 scale. The notes are Bb, C, D, Eb, F, G, Ab. The scale is labeled with Roman numerals: R (root), T9 (9th), 3 (3rd), T#11 (sharp 11th), 5 (5th), T13 (13th), $b7$ (flat 7th), and R (root).

ディミニッシュコードのスケール

パッシング・ディミニッシュ

C#dim7

I dim7 ※1

R S#2 b3 S3 b5 T#13 6 T7 R

D#dim7 ※2

R S#2 b3 S3 b5 T#13 6 T7 R

F#dim7 ※3

R S#2 b3 T11 b5 T#13 6 T7 R

G#dim7

R S#2 b3 S3 b5 T#13 6 T7 R

クロマティック・ディミニッシュ

Ebdim7 ※4

b III dim7

R T9 b3 S3 b5 T#13 6 T7 R

オグジュアリー・ディミニッシュ ※5

Cdim7

I dim7

R T9 b3 T11 b5 T#13 6 T7 R

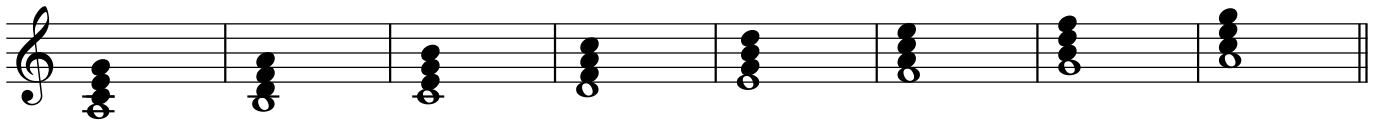
Gdim7

R T9 b3 T11 b5 T#13 6 T7 R

マイナーのダイアトニックコード

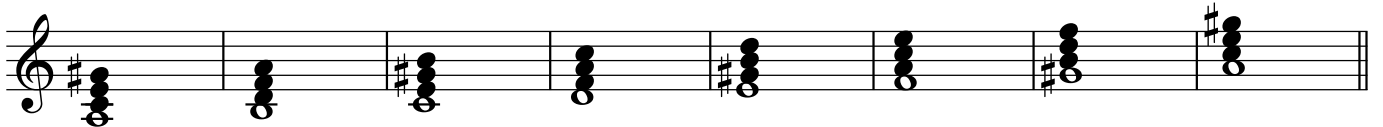
ナチュラルマイナー(自然的短音階)

Ⓣ	Ⓢⓓ	Ⓣ	Ⓢⓓ	ⓓ	Ⓢⓓ	Ⓢⓓ	Ⓣ
I m7	II m7(♭5)	♭ III Maj7	IV m7	V m7	♭ VI Maj7	♭ VII7	I m7
N.Minor	Locrian	Ionian	Dorian	Phrygian	Lydian	Mixo.	Aeolian
Am7	Bm7(♭5)	CMaj7	Dm7	Em7	FMaj7	G7	Am7



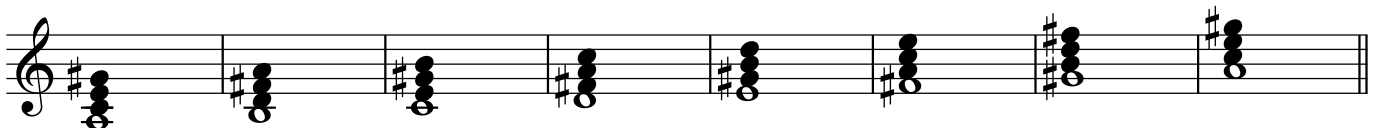
ハーモニックマイナー(和声的短音階)

Ⓣ	Ⓢⓓ	Ⓣ	Ⓢⓓ	ⓓ	Ⓢⓓ	ⓓ	Ⓣ
I m(Maj7)	II m7(♭5)	♭ III Maj7(#5)	IV m7	V 7	♭ VI Maj7	VII dim7	I m(Maj7)
H.Minor	Locrian(13)	Ionian(#5)	Dorian(#11)	Mixo.(♭9,♭13)	Lydian	Locrian(♭4,°7)	H.Minor
Am(Maj7)	Bm7(♭5)	CMaj7(#5)	Dm7	E7	FMaj7	G#dim7	Am(Maj7)



ジャズマイナー(上行旋律的短音階)

Ⓣ	Ⓢⓓ	Ⓣ	Ⓢⓓ	ⓓ	Ⓣ	ⓓ	Ⓣ
I m(Maj7)	II m7	♭ III Maj7(#5)	IV 7	V 7	VI m7(♭5)	VII m7(♭5)	I m(Maj7)
M.Minor	Dorian(♭9)	Lydian(#5)	Lydian♭7	Mixo.(9,♭13)	Locrian(9)	Locrian(♭4)	M.Minor
Am(Maj7)	Bm7	CMaj7(#5)	D7	E7	F#m7(♭5)	G#m7(♭5)	Am(Maj7)



マイナーにおいて頻繁に使用されるコードとコードスケール

Am Am7 ナチュラル・マイナー N.Minor

① I m I m7

R T9 $b3$ T11 5 $Sb6$ $b7$ R

Am Am6 Am(Maj7) メロディック・マイナー M.Minor

① I m I m6
I m(Maj7)

R T9 $b3$ T11 5 m6 : 6 T7 R
(m(Maj7) : T13 7)

Am Am(Maj7) ハーモニック・マイナー H.Minor

① I m I m6

R T9 $b3$ T11 5 $Sb6$ T7 R

※ハーモニックマイナーはコードスケールとしては、(アドリブの為には)あまり使用されない

Bm7($b5$) ロクリアン Locrian

② II m7($b5$)

R $Sb2$ $b3$ T11 $b5$ $Tb13$ $b7$ R

CMaj7 ★ イオニアン Ionian

① b III Maj7

R T9 3 S4 5 T13 7 R

Dm7 ★ ドリアン Dorian

② IV m7

R T9 $b3$ T11 5 S6 $b7$ R

E7 ミクソリディアン($b9$, $b13$) Mixo.($b9$, $b13$)

① V 7

R $Tb9$ $T\#9$ 3 S4 5 $Tb13$ $b7$ R

FMaj7 ★ リディアン Lydian

② b VI Maj7

R T9 3 $T\#11$ 5 T13 7 R

G7 ★ ミクソリディアン Mixo.

② b VII 7

R T9 3 S4 5 T13 $b7$ R

※ ★印の4つのコードは並行調(このケースはキーC)として分析されることが多い

メジャーにおける頻繁に使用される モーダル インターチェンジ コードとそのスケール in C

I m7	Cm7	Dorian	
	R	T9	b3 T11 5 S6 b7 R
b II Maj7	D ^b Maj7	Lydian	
	R	T9	3 T#11 5 T13 7 R
II m7(b5)	Dm7(b5)	Locrian(9)	※ Locrian スケールも選択可。その時はS b 2(ミb)機能はRel II m7 b 5(本サイト独自解釈)
	R	T9	b3 T11 b5 T#13 b7 R
b III Maj7	E ^b Maj7	Lydian	
	R	T9	3 T#11 5 T13 7 R
IV Maj7	F Maj7	Ionian	※ 前のコードがV7/IVの時。または次のコードがIVm系のコードの時。
	R	T9	3 S4 5 T13 7 R
IV m6	Fm6	M.Minor	
	R	T9	b3 T11 5 6 T7 R
IV m7	Fm7	Dorian	
	R	T9	b3 T11 5 S6 b7 R
V m7	Gm7	Dorian	
	R	T9	b3 T11 5 S6 b7 R
b VI Maj7	A ^b Maj7	Lydian	
	R	T9	3 T#11 5 T13 7 R
b VII 7	B ^b 7	Mixo.	※Lydian b 7も可 ただしその時の機能はSFDの時が多い(本サイト独自解釈)
	R	T9	3 S4 5 T13 b7 R