

The Girl From Ipanema

分析(矢印 カギ括弧 アナライズ(ローマ数字) コードスケール名)を書き込む

F Maj7 G7

1. 2.3.

Gm7 Gb7 FMaj7 Gb7 FMaj7

Fine

G^bMaj7 B7

F[#]m7 D7

Gm7 E^b7

Am7 D7 Gm7 C7

D.C.

The Girl From Ipanema

分析 (矢印 カギ括弧 アナライズ(ローマ数字) コードスケール名)を書き込む

① T
I Maj7
Ionian
F Maj7
G7

② SD
II m7
Dorian
Gm7
Gb7
F Maj7
Gb7
F Maj7
① T
I Maj7
Ionian
② T
I Maj7
Ionian
F Maj7
Fine

③ SD
IV Maj7
Lydian
↓ 3:Db
Gb Maj7
B7

④ SD
II m7
Dorian
↑ b 3:E
F#m7
D7

⑤ SD
II m7
Dorian
↑ b 2:F
Gm7
Eb7

⑥ T
III m7
Phrygian
Am7
D7
Gm7
C7
⑦ SD
II m7
Dorian
⑧ D
V7
Mixo.
D.C.

The Girl From Ipanema

分析 (矢印 カギ括弧 アナライズ(ローマ数字) コードスケール名) を書き込む

System 1:

- Treble staff: (T) I Maj7 Ionian, (Sec.D) (V7/V) Mixo., G7
- Bass staff: F Maj7

System 2:

- Treble staff: (SD) II m7 Dorian, (Sub.D) SV7 Lydian \flat 7, (T) I Maj7 Ionian, (Sub.D) SV7 Lydian \flat 7, (T) I Maj7 Ionian
- Bass staff: Gm7, G \flat 7, F Maj7, G \flat 7, F Maj7

System 3:

- Key signature: \downarrow 3:Db
- Treble staff: (SD) IV Maj7 Lydian, (SFD) \flat VII7 Lydian \flat 7, B7
- Bass staff: G \flat Maj7

System 4:

- Key signature: \uparrow \flat 3:E
- Treble staff: (SD) II m7 Dorian, (SFD) \flat VII7 Lydian \flat 7, D7
- Bass staff: F \sharp m7

System 5:

- Key signature: \uparrow \flat 2:F
- Treble staff: (SD) II m7 Dorian, (SFD) \flat VII7 Lydian \flat 7, E \flat 7
- Bass staff: Gm7

System 6:

- Treble staff: (T) III m7 Phrygian, (Sec.D) V7/II Mixo. (\flat 13), (SD) II m7 Dorian, (D) V7 Mixo.
- Bass staff: Am7, D7, Gm7, C7

D.C.

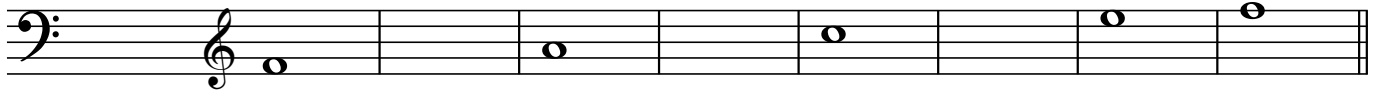
The Girl From Ipanema

レフトハンドヴォイシングとコードスケール

指定されたコードスケール(スケールノートは黒丸)と、そのスケール名、音程と役割(R、 \flat 3、T9、S4等)を書き込む

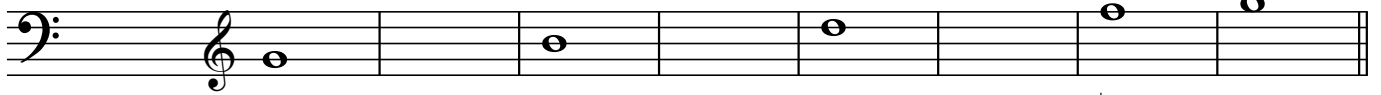
レフトハンドヴォイシング / コードスケール

スケール名↓
FMaj7 ()



R 3 5 7 R

G7 ()



R 3 5 \flat 7 R

Gm7 ()



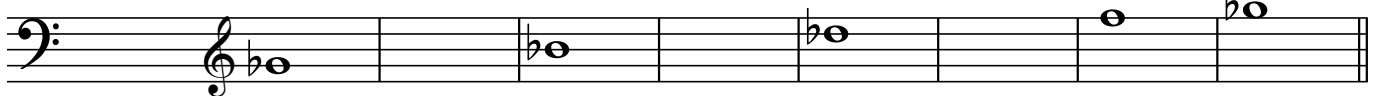
R \flat 3 5 \flat 7 R

G \flat 7 ()



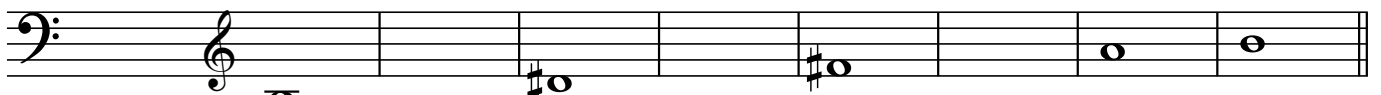
R 3 5 \flat 7 R

G \flat Maj7 ()



R 3 5 7 R

B7 ()



R 3 5 \flat 7 R

F#m7 ()

A musical staff in bass clef with a treble clef. It contains six measures of music. The notes are: F# (root), A (3rd), C# (5th), E (b7th), and F# (root). The notes are placed on the staff as follows: F# on the first line, A on the second line, C# on the second space, E on the third space, and F# on the first line.

R b3 5 b7 R

D7 ()

A musical staff in bass clef with a treble clef. It contains six measures of music. The notes are: D (root), F# (3rd), A (5th), C (b7th), and D (root). The notes are placed on the staff as follows: D on the first line, F# on the second space, A on the second space, C on the third space, and D on the first line.

R 3 5 b7 R

E^b7 ()

A musical staff in bass clef with a treble clef. It contains six measures of music. The notes are: E^b (root), G (3rd), B^b (5th), D (b7th), and E^b (root). The notes are placed on the staff as follows: E^b on the first space, G on the second space, B^b on the second space, D on the third space, and E^b on the first space.

R 3 5 b7 R

A^m7 ()

A musical staff in bass clef with a treble clef. It contains six measures of music. The notes are: D (root), F (3rd), A (5th), C (b7th), and D (root). The notes are placed on the staff as follows: D on the first line, F on the second space, A on the second space, C on the third space, and D on the first line.

R b3 5 b7 R

D7 ()

A musical staff in bass clef with a treble clef. It contains six measures of music. The notes are: D (root), F# (3rd), A (5th), C (b7th), and D (root). The notes are placed on the staff as follows: D on the first line, F# on the second space, A on the second space, C on the third space, and D on the first line.

R 3 5 b7 R

The Girl From Ipanema

レフトハンドヴォイシングとコードスケール

指定されたコードスケール(スケールノートは黒丸)と、そのスケール名、音程と役割(R、 \flat 3、T9、S4等)を書き込む

レフトハンドヴォイシング / コードスケール

スケール名↓
FMaj7 (Ionian)

R T9 3 S4 5 T13 7 R

G7 (Mixo.)

R T9 3 S4 5 T13 \flat 7 R

Gm7 (Dorian)

R T9 \flat 3 T11 5 S6 \flat 7 R

G \flat 7 (Lydian \flat 7)

R T9 3 T#11 5 T13 \flat 7 R

G \flat Maj7(Lydian)

R T9 3 T#11 5 T13 7 R

B7 (Lydian \flat 7)

R T9 3 T#11 5 T13 \flat 7 R

F#m7 (Dorian)

R T9 $\flat 3$ T11 5 S6 $\flat 7$ R

D7 (Lydian $\flat 7$)

R T9 3 T#11 5 T13 $\flat 7$ R

E $\flat 7$ (Lydian $\flat 7$)

R T9 3 T#11 5 T13 $\flat 7$ R

A $\flat 7$ (Phrygian)

R S $\flat 2$ $\flat 3$ T11 5 S $\flat 6$ $\flat 7$ R

D7 (Mixo. $\flat 13$)

R T9 3 S4 5 T13 $\flat 7$ R