

# ジャズ理論 第8回

## 「スペシャル ファンクション ドミナント」

### ① I 7とIV 7

#### ジャズのブルース

Staff 1: F7 | B $\flat$ 7 | F7

Staff 2: B $\flat$ 7 | F7 | D7

Staff 3: Gm7 | C7 | F7 | ( Gm7 C7 )

Annotations for Staff 3:  
① SD II m7 ドリアン  
② D V 7 ミクソ.  
③ SD II m7 ドリアン ④ D V 7 ミクソ.

#### 3コード ブルース

Staff 1: F7

Staff 2: B $\flat$ 7 | F7

Staff 3: C7 | B $\flat$ 7 | F7

# コードスケール

補助音に注意

F7

Musical notation for F7 chord scale in treble clef. The scale consists of eight notes: F (R), A (3), C (5), E♭ (♭7), and F (R). The notes are placed on the staff as follows: F on the first line, A on the second space, C on the third space, E♭ on the fourth space, and F on the first line.

B♭7

Musical notation for B♭7 chord scale in treble clef. The scale consists of eight notes: B♭ (R), D (3), F (5), A♭ (♭7), and B♭ (R). The notes are placed on the staff as follows: B♭ on the first space, D on the second space, F on the third space, A♭ on the fourth space, and B♭ on the first line.

D7

Musical notation for D7 chord scale in treble clef. The scale consists of eight notes: D (R), F♯ (3), A (5), C (♭7), and D (R). The notes are placed on the staff as follows: D on the second space, F♯ on the third space, A on the third space, C on the fourth space, and D on the first line.

Gm7

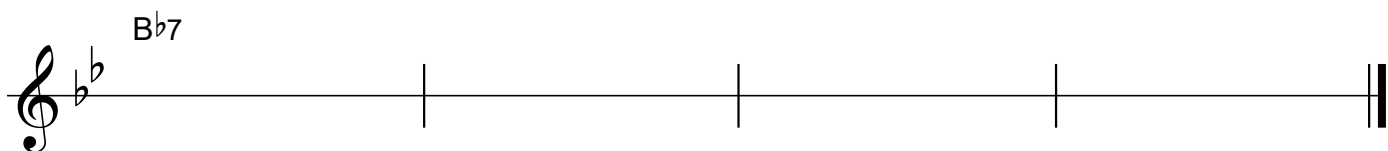
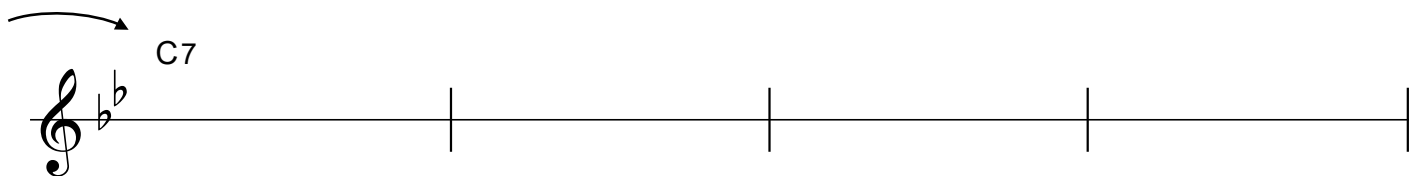
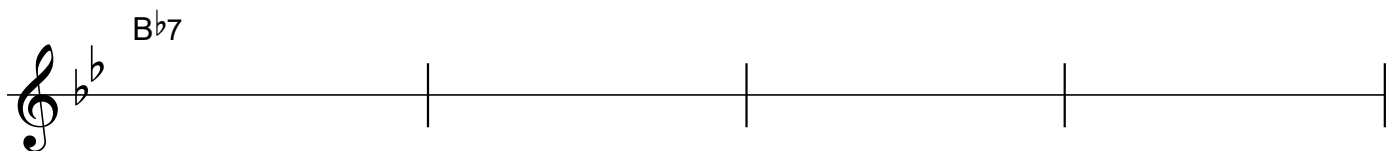
Musical notation for Gm7 chord scale in treble clef. The scale consists of eight notes: G (R), B♭ (♭3), D (5), F (♭7), and G (R). The notes are placed on the staff as follows: G on the second space, B♭ on the third space, D on the third space, F on the fourth space, and G on the first line.

C7

Musical notation for C7 chord scale in treble clef. The scale consists of eight notes: C (R), E (3), G (5), B♭ (♭7), and C (R). The notes are placed on the staff as follows: C on the first line, E on the second space, G on the third space, B♭ on the fourth space, and C on the first line.

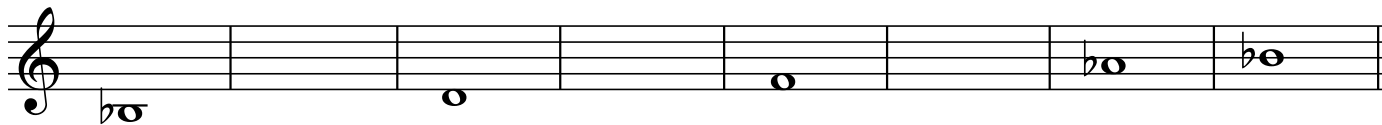
The Chicken

② II 7



# コードスケール

B $\flat$ 7

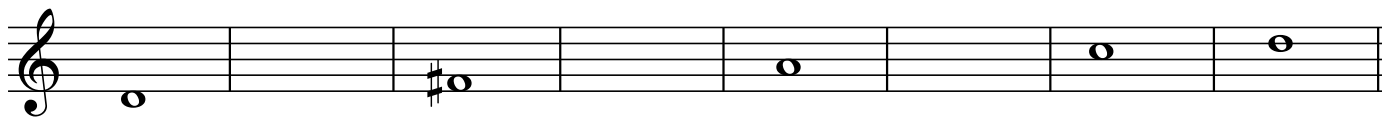


R                      3                      5                       $\flat$ 7                      R  
E $\flat$ 7



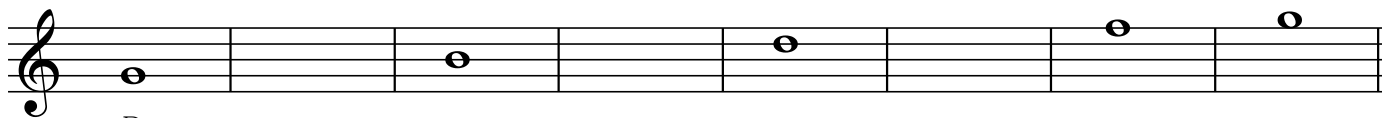
R                      3                      5                       $\flat$ 7                      R

D7



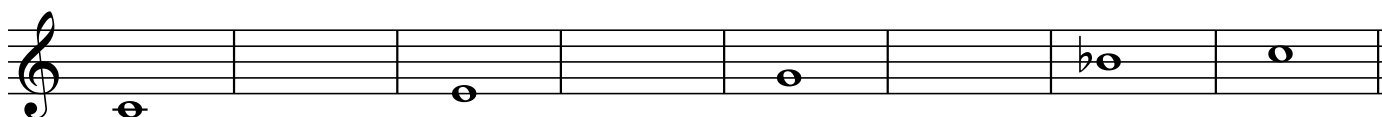
R                      3                      5                       $\flat$ 7                      R

G7



R                      3                      5                       $\flat$ 7                      R

C7



R                      3                      5                       $\flat$ 7                      R

## Lover Come Back To Me

(T)

I  
イオニアン

B $\flat$

(D)

(VII $\text{m}7(\flat 5)$ )  
ロクリアン

Am7( $\flat 5$ )

(Sec.D)

V7/VI  
ミクソ.( $\flat 9, \flat 13$ )

D7

(T)

VI $\text{m}7$   
エオリアン

G $\text{m}7$

C7

(T)

I  
イオニアン

B $\flat$

(T)

VI $\text{m}7$   
エオリアン

G $\text{m}7$

(SD)

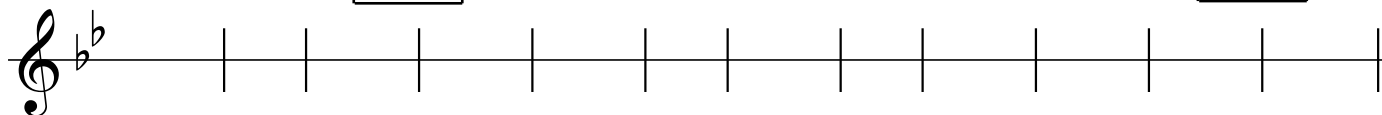
II $\text{m}7$   
ドリアン

C $\text{m}7$

(D)

V7  
ミクソ.

F7 (B $\flat$ )



## 2種類のIV 7

### Confirmation

(T) I イオニアン  
 (D) (VII<sup>m</sup>7(b5)) ロクリアン  
 (Sec.D) V 7/VI ミクソ.(b9, b13)  
 (T) VI<sup>m</sup>7 エオリアン

F      Em7(b5) A7      Dm7 G7      Cm7 F7

(T) I イオニアン

B<sup>b</sup>7      Am7(b5) D7      G7      G<sup>m</sup>7(b5) C7      F

### On A Clear Day

(T) I Δ7 イオニアン  
 G Δ7      C7

(T) I Δ7 イオニアン  
 (SD) II<sup>m</sup>7 ドリアン

G Δ7      B<sup>m</sup>7(b5) E7      Am7

(D)

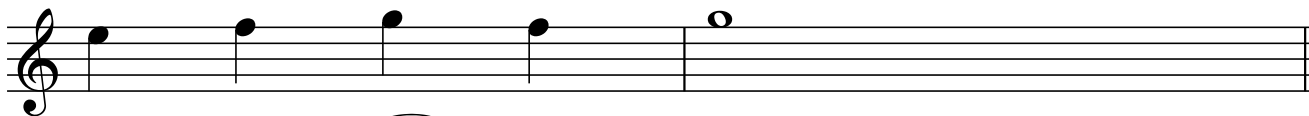
# ♭VII7について

V7  
ミクソ.

Dm7

G7

CΔ7



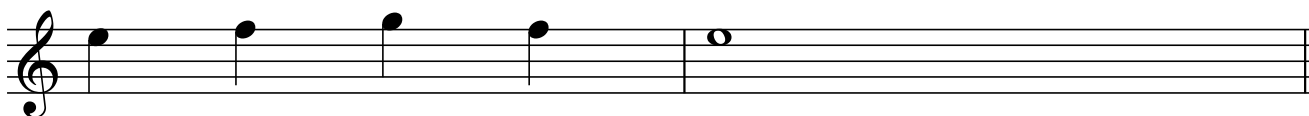
(Sub.D)

SV7  
リディアノン♭7

Dm7

D♭7

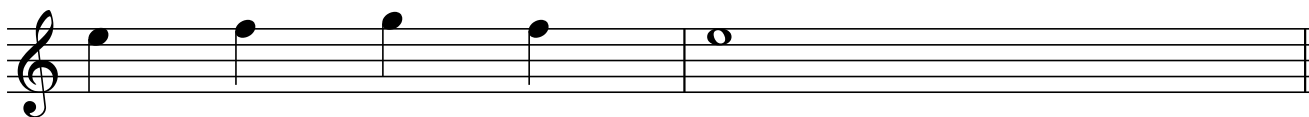
CΔ7



Dm7

B♭7

CΔ7



CΔ7

B♭7

CΔ7

B♭7



(Rel)

(M.I.)

R II m7  
ドリアン

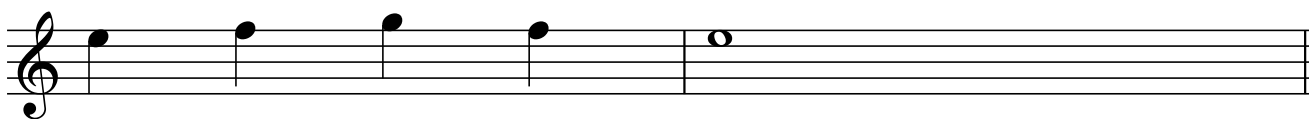
♭VII7  
ミクソ.

Dm7

Fm7

B♭7

CΔ7



# ♭ VII 7 と ♭ VI 7

## I Mean You

T  
 I 6  
 イオニアン  
 F6

Sec.D  
 V 7 / II  
 ミクソ.(♭ 13)  
 D7

SD  
 II m7  
 ドリアン  
 Gm7

D  
 V 7  
 ミクソ.  
 C7

T  
 I  
 イオニアン  
 F

*Fine*

T  
 I  
 イオニアン  
 F6

Sub.D  
 SV 7 / V  
 リディアン ♭ 7  
 D♭7

D  
 V 7  
 ミクソ.  
 C7

*D.C.*

D♭7

R                      3                      5                      ♭7                      R

E♭7

R                      3                      5                      ♭7                      R